



# LabVIEW Project Explorer

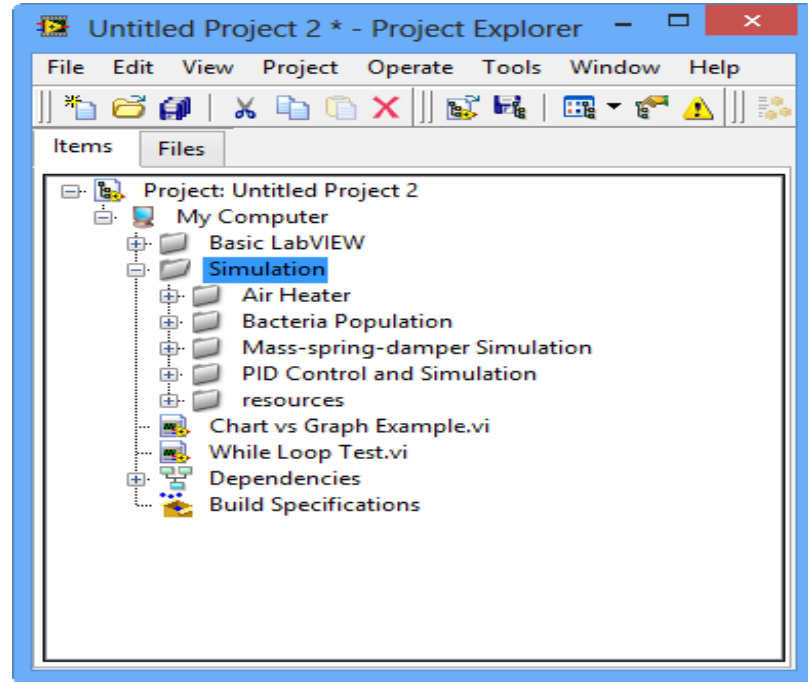
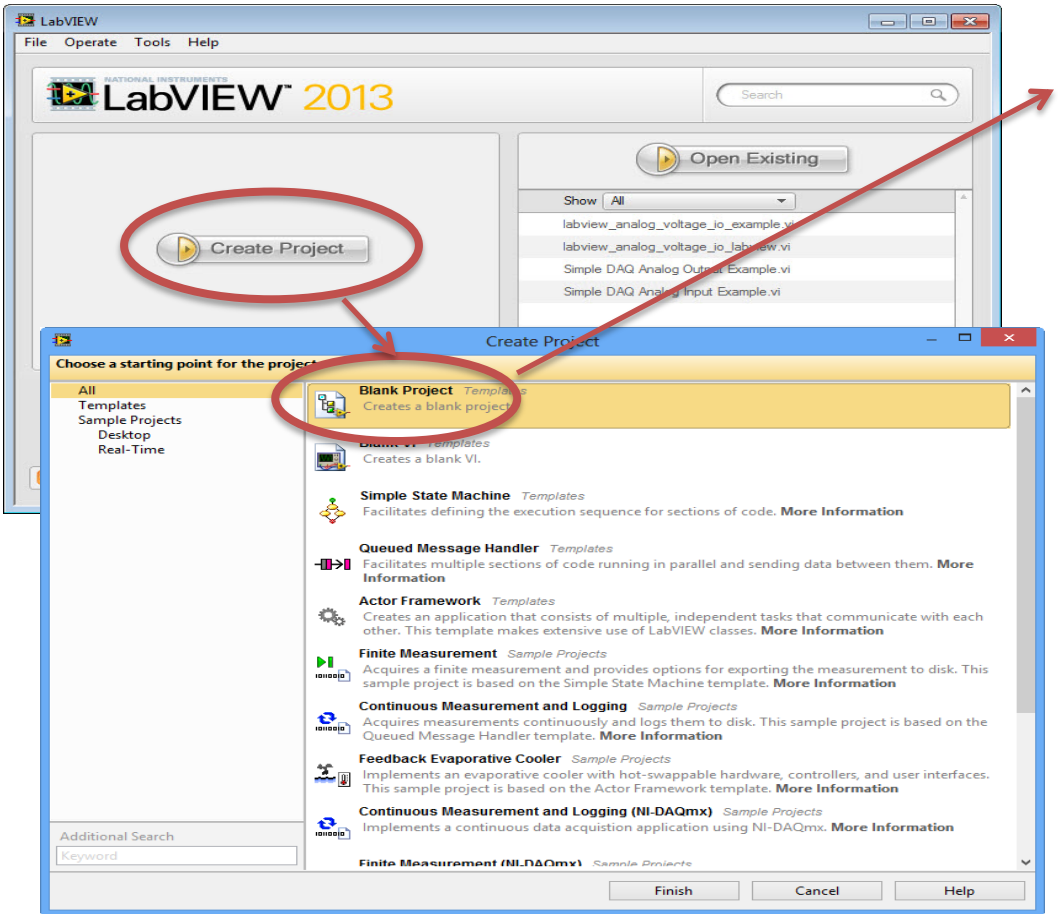
Hans-Petter Halvorsen

# LabVIEW Project Explorer

- Known from other Programming Environment, like Visual Studio (Called Solution Explorer), etc.
- Use it if your Application consists of multiple VIs and Files
- Use it when you need to create Executables, Web Services, Real-Time and Embedded Applications, etc.

# Project Explorer

Similar to “Solutions Explorer” in Visual Studio. It Keeps all your Files for a specific project in one place.



It is recommended to use this when you create larger applications that contains lots of VIs and other files, etc.

**DEMO**

# Hans-Petter Halvorsen

University of South-Eastern Norway

[www.usn.no](http://www.usn.no)

E-mail: [hans.p.halvorsen@usn.no](mailto:hans.p.halvorsen@usn.no)

Web: <https://www.halvorsen.blog>

